

See discussions, stats, and author profiles for this publication at: <https://www.researchgate.net/publication/330263022>

Dynamic evaluation of blood flow microcirculation by combined use of the laser Doppler flowmetry and high-speed videocapillaroscopy methods

Article in *Journal of Biophotonics* · January 2019

DOI: 10.1002/jbip.201800317

CITATIONS

0

READS

56

8 authors, including:



Viktor Dremín

Orel State University

42 PUBLICATIONS 127 CITATIONS

[SEE PROFILE](#)



Igor Kozlov

Orel State University

10 PUBLICATIONS 19 CITATIONS

[SEE PROFILE](#)



Nikita Margaryants

ITMO University

26 PUBLICATIONS 48 CITATIONS

[SEE PROFILE](#)



Andrey Potemkin

ITMO University

13 PUBLICATIONS 17 CITATIONS

[SEE PROFILE](#)

Some of the authors of this publication are also working on these related projects:








spectroscopy [View project](#)



Oscillating processes in the human microcirculatory system in normal and pathological conditions [View project](#)

FULL ARTICLE

Dynamic evaluation of blood flow microcirculation by combined use of the laser Doppler flowmetry and high-speed videocapillaroscopy methods

Viktor Dremin^{1,2*}  | Igor Kozlov¹ | Mikhail Volkov³ | Nikita Margaryants³  |
Andrey Potemkin³ | Evgeny Zherebtsov^{1,2}  | Andrey Dunaev¹  | Igor Gurov³ 

¹Research & Development Center of Biomedical Photonics, Orel State University named after I.S. Turgenev, Orel, Russia

²Optoelectronics and Measurement Techniques Unit, University of Oulu, Oulu, Finland

³Faculty of Applied Optics, ITMO University, St. Petersburg, Russia

*Correspondence

Viktor Dremin, Research & Development Center of Biomedical Photonics, Orel State University named after I.S. Turgenev, Komsomolskaya Str. 95, 302026, Orel, Russia.
Email: dremin_viktor@mail.ru

Funding information

Academy of Finland, Grant/Award Number: 318281; Ministry of Science and Higher Education of the Russian Federation, Grant/Award Number: 8.2501.2017/4.6; Russian Science Foundation, Grant/Award Number: 18-15-00201

The dynamic light scattering methods are widely used in biomedical diagnostics involving evaluation of blood flow. However, there exist some difficulties in quantitative interpretation of backscattered light signals from the viewpoint of diagnostic information. This study considers the application of the high-speed videocapillaroscopy (VCS) method that provides the direct measurement of the red blood cells (RBCs) velocity into a capillary. The VCS signal presents true oscillation nature of backscattered light caused by moving RBCs. Thus, the VCS signal can be assigned as a reference one with respect to more complicated signals like in laser Doppler flowmetry (LDF). An essential correlation between blood flow velocity oscillations in a separate human capillary and the integral perfusion estimate obtained by the LDF method has been found. The observation of blood flow by the VCS method during upper arm occlusion has shown emergence of the reverse blood flow effect in capillaries that corresponds to the biological zero signal in the LDF. The reverse blood flow effect has to be taken into account in interpretation of LDF signals.



KEYWORDS

blood flow velocity oscillations, laser Doppler flowmetry, occlusion test, reverse blood flow, videocapillaroscopy, wavelet coherence

1 | INTRODUCTION

The dynamic light scattering (DLS) methods are widely used in biomedical diagnostics including evaluation of blood flow [1]. However, there exist some difficulties in the evaluation and quantitative interpretation of backscattered light signals from the viewpoint of diagnostic information. The well-known

laser Doppler flowmetry (LDF) method [2] has been widely employed in many research applications. However, the high spatial variability in blood flow across living tissue limits the clinical utility of single point LDF measurements [3]. The full-field laser Doppler perfusion imaging allows overcoming this limit, but does not provide high enough signal-to-noise ratio and, consequently, high evaluation speed that can be achieved

in the laser speckle contrast imaging (LSCI) [3, 4], but with limited resolution caused by spatial averaging. Diffusing-wave spectroscopy, also called diffuse correlation spectroscopy [5, 6], allows studying the dynamics of scattered light under assumption of strong multiple scattering. However, this method is associated with the analytical solution of complex equations of the transfer theory, which leads to the complexity of interpreting the results. All these methods relate to well known approaches in studying blood microcirculation for early diagnosis of various diseases and monitoring the effectiveness of therapeutic impacts. However, the analysis and physiological interpretation of the blood flow oscillations remain an open problem for these methods. The blood flow fluctuations are often considered as a source of signal nonrepeatability arising from the stochastic nature of red blood cells (RBCs) velocity fluctuations [7]. At the same time, local spectral decomposition of long-term perfusion records allows one to reveal the oscillatory components corresponding to the specific physiological mechanisms. Such local spectral decomposition can be provided particularly by the wavelet transformation of the LDF signals. Cardiac bands (0.45-1.6 Hz) and respiratory bands (0.2-0.45 Hz) provide information about the influence of heart rate and thorax movement on the peripheral blood flow. The myogenic mechanism of vascular tone regulation reflects the response of vascular smooth muscle cells to the transmural pressure. It is characterized by oscillations of blood flow at frequencies 0.05 to 0.15 Hz. The neurogenic sympathetic vasomotor activity induces vessels walls movement with frequency 0.02 to 0.05 Hz. Slow blood flow waves (0.005-0.0095 and 0.0095-0.02 Hz) indicate the vascular tone regulation due to the endothelium activity, both nitric oxide-dependent and independent. These mechanisms are considered in detail in refs. [7-9]. Thus, useful diagnostic information is contained in various spectral bands, and time-frequency signal analysis is of high importance. However, there are still questions, for instance, whether the integral parameter of perfusion corresponds to a real change of blood flow velocity in capillaries. It is important to clarify the mechanism of the LDF signal origin involving direct evaluation of the RBCs velocity into capillaries.

Various recent studies have shown possibility of improving the quality of LDF measurements through a multimodal approach consisting in the combined use of several methods. LDF in combination with contact thermometry has improved the sensitivity and specificity of diagnosing patients with angiospastic violations in the vascular system [10]. The use of LDF and fluorescence spectroscopy allowed for the qualitative diagnosis of diabetes complications [11]. Due to the higher efficiency of multimodal approaches, we propose in the present study to use the videocapillaroscopy (VCS) method as a technique based on different physical principle with respect to LDF measurements that provides new and reliable results.

The VCS is based on high resolving registration and analysis of moving RBCs with evaluation of their velocity in a separate capillary by recording a video frames series representing a nailfold capillary blood flow. It extracts the parameters of capillary blood flow of individual capillaries as well as into a capillary net [12].

It should be noted that other methods can be used to determine the blood flow velocity. For instance, the Doppler optical coherence tomography (DOCT) methods have been used for evaluation of the flow velocity in blood vessels [13]. However, conventional DOCT systems are unable to measure blood flow velocity in a wide field of view at all the points along a vessel length simultaneously. Moreover, conventional DOCT systems provide a lower spatial resolution (about 10 μm) in comparison with high-resolving nailfold VCS (up to 1 μm). Finally, the DOCT does not present a method of direct velocity measurement being based on the same Doppler effect as the LDF.

The Sidestream Dark Field imaging method is known as well. This technique allows for tracking the movement of individual blood cells with high resolution [14]. However, some technical limits inherent in this method make it inapplicable to observe the RBCs with high movement velocity, which is especially important in the study of blood flow, for example, in the hyperemia stage [15, 16].

In the present research, we exploit a high-speed camera and advanced data processing algorithm that provide high accuracy of RBCs velocity measurements up to several mm/s [12]. Moreover, the combination of LDF and high-speed VCS is motivated by the involvement of two methods with different physical principles, so the results are independent of each other, and their comparison makes the results more reliable. It has been shown in previous studies that combined approach can be used to validate photoplethysmographic records [17]. A single-capillary estimate of RBCs velocity may also be of particular interest for many applications of LDF measurements. The combined use of the LDF and VCS methods can resolve many doubts concerning the LDF method, for example, about the origin of LDF signal oscillations. The VCS method allows direct measurement of the RBCs velocity in a capillary thus presenting true oscillation nature of the signal caused by moving RBCs. Thus, this method can verify the data obtained by LDF devices, as well as substantiate interpretation of identified features of LDF signals. In this paper, the dynamics of perfusion in a distal finger phalanx and capillary blood flow (RBCs velocity) using the LDF and VCS methods, respectively, are considered.

2 | MATERIAL AND METHODS

2.1 | Experimental setup

The LDF method is based on the optoelectronic system configuration represented by the schematic diagram shown on the left in Figure 1.

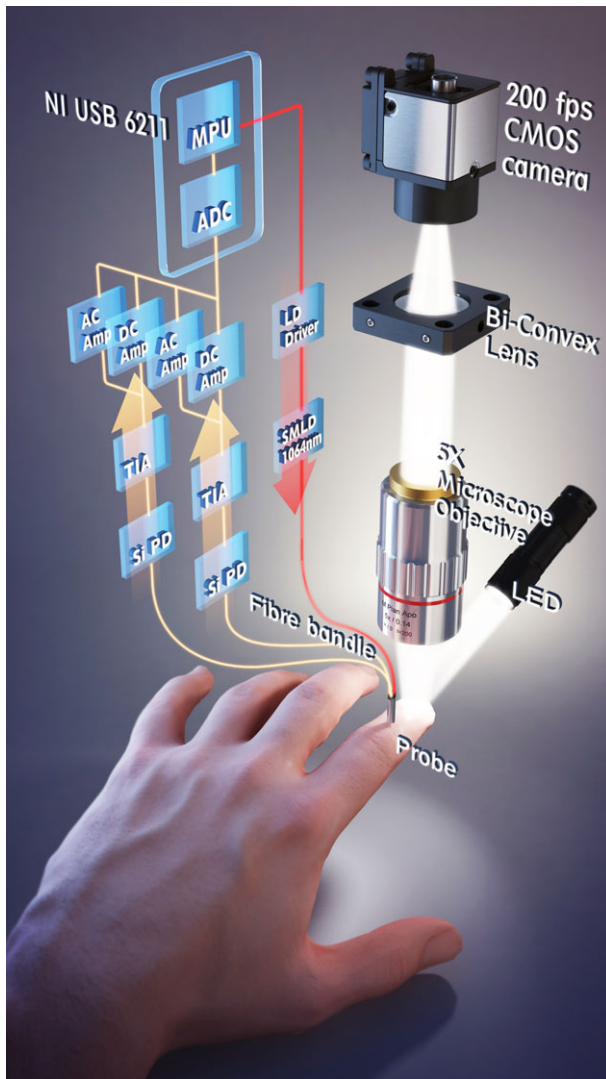


FIGURE 1 The overall scheme of the system. AC Amp, AC signal amplifier; ADC, analogue-to-digital converter; DC Amp, DC signal amplifier; LD driver, laser diode driver; MPU, microprocessing unit; Si PD, silicon photodiode; SMLD, single-mode laser diode; TIA, transimpedance amplifier

The single-mode laser with 1064 nm wavelength was utilized as a radiation source. Optical fibers were used to deliver radiation to the skin surface and to collect backscattered light.

Due to the technical limit of the LDF measurements within the nail bed area, the LDF signals were recorded at the middle phalanx of the same finger.

From the viewpoint of the light intensity distribution in a tissue, the sampling volume for the wavelength of 1064 nm depends less on the blood absorption and oxygen saturation, which reduce unwanted variability of the registered signal from measurement to measurement. Consequently, the assessment of perfusion parameter at the wavelength of 1064 nm characterizes mainly the velocity of scattering particles rather than the absorbing properties of living tissue.

The LDF probe sampling volume simulation based on the Monte Carlo technique [11] has shown that the

diagnostic volume is about 1.8 mm^3 . In this case, the probe is sensitive to variations of blood flow in the papillary dermis and upper blood net plexus. The probe diagnostic volume covers the top part of the reticular dermis, which corresponds to the classical understanding of the sampling volume in the LDF method. Si-photodiodes were used to convert detected backscattered radiation into photocurrent. Then the signal was amplified by a custom electronic board. In this implementation of LDF setup, a differential circuit is used, which makes it possible to remove common-mode non-informative signal components for two channels. The analog-to-digital conversion was performed by the data acquisition board model NI USB 6211 (National Instruments, Austin, Texas). Signal processing is conducted in the PC with NI LabVIEW environment.

The study of a nailfold capillary network was performed using the experimental VCS setup (see Figure 1 on the right) providing direct evaluation of the RBCs velocity. The nailfold area of the hand index finger was illuminated by a white LED. A $\times 5$ microscope objective with aperture 0.14 and a long-focus lens formed a capillary image on a photosensitive array. During the experiments, a high-speed CMOS camera with 200 fps was acquiring the video data. The high-speed VCS technique enables to obtain detailed information about the RBCs velocity into a capillary as well as capillary net. The detailed description of algorithms for video frames processing is presented in refs. [12, 17, 18].

2.2 | Correlation of perfusion and RBCs velocity in a basal state

To study the general relationship of the signals in the basal state, the LDF signal and RBCs velocity in a single capillary were recorded in parallel for 14 minutes. The data was acquired at the sampling frequency of 250 Hz in VCS method and 20 Hz in LDF method. For the comparative data analysis, we have taken the VCS data at the time points corresponding to the LDF data samples.

The LDF and VCS signals contain useful information about blood flow but in different form. It is important to evaluate the correspondence between the signals involving additional information provided by the VCS data to verify the LDF signal origin. Due to specific and local-variable properties of the signals mentioned above and inherent in blood flow study, it is reasonable to apply local spectral analysis implemented in the form of the continuous wavelet transform (CWT).

LDF and VCS signals were decomposed using CWT in the form:

$$W(s, \tau) = \frac{1}{\sqrt{s}} \int_{-\infty}^{\infty} x(t) \psi^* \left(\frac{t-\tau}{s} \right) dt, \quad (1)$$

where $x(t)$ is a target signal, τ is local time index, s is scaling factor, * means complex conjugation. The Morlet wavelet defined in the form

$$\psi(t) = e^{2\pi it} e^{-t^2/\sigma} \quad (2)$$

was used with the decay parameter $\sigma = 1$. This wavelet allows one to ensure sufficient time-frequency resolution and is well localized in the time domain.

The combined study of the VCS and LDF signals has to be conducted locally in time as well as at different frequencies. Such time-frequency comparison of two nonstationary signals can be provided involving the wavelet-based coherence. The wavelet transform coherence allows one to calculate the local correlation of two functions $x(t)$ and $y(t)$ with wavelet transforms $W^x(s, \tau)$ and $W^y(s, \tau)$ in the time-frequency domain [19–21]. This value is calculated in the form

$$R^2(s, \tau) = \frac{|H(s^{-1}W^{xy}(s, \tau))|^2}{H(s^{-1}|W^x(s, \tau)|^2) \cdot H(s^{-1}|W^y(s, \tau)|^2)}, \quad (3)$$

where $R^2(s, \tau)$ ranges between 0 and 1, $W^{xy}(s, \tau) = W^x(s, \tau)W^{*y}(s, \tau)$ is a cross-wavelet spectrum, H is a smoothing operator. The smoothing in Equation (3) is based on a weighted moving average in both the time and scale directions as described in detail by Torrence and Compo [22]. The smoothing assists to remove the singularities in wavelet power spectra and improves the reliability of calculations in Equation (3).

The degree of correlation between the phases of the analyzed signals was also estimated from the viewpoint of the wavelet phase coherence [23].

The significance of the correlation is verified by constructing the surrogate data. For a surrogate generation we employed the method of amplitude-adjusted Fourier transform (AAFT). The AAFT produces surrogates having original values retained in the time series but rearranged in a way that largely preserves the spectrum while destroying temporal information [24]. We provided 100 pairs of surrogate data for each pair of experimental signal samples. Significance levels were calculated as the 95th percentile of the surrogates.

Previously, the calculation of wavelet-based coherence was carried out to study the relationship among skin temperature, blood flow, tissue saturation, electrocardiography signals, etc. This tool revealed significant relationships between skin temperature oscillations and peripheral blood flow [25, 26], tissue saturation and peripheral blood flow [27], peripheral blood flow of contralateral skin sites [28].

For reliable statistics, one should include at least 10 cycles for each of the frequency components under investigation. We were conducting 14-minute records. Therefore, reliable results can be obtained only for frequencies exceeding approximately 0.01 Hz.

Evaluation of the wavelet-based coherence reveals correspondence between the VCS and LDF data through their local spectra, that is, locally in time and at different

frequencies. Such correspondence has been clarified in our research. The results are discussed below.

2.3 | Correlation of perfusion and RBCs velocity with arterial occlusion

To study the behavior of the two signals under conditions other than normal, an arterial occlusion test was used. The experiments included the following procedures: recording of background level (basal state) of perfusion and RBC velocity (30 seconds), occlusion test (90 seconds) and post-occlusion hyperemia (10 seconds). The occlusion test was performed according to the conventional procedure involving the application of a brachial arterial occlusion cuff with the pressure of 200 to 220 mmHg.

3 | RESULTS AND DISCUSSION

3.1 | Correlation of perfusion and RBCs velocity in a basal state

The LDF signal (perfusion) and RBC velocity variations are shown in Figure 2A,B, respectively. Figure 2C,D corresponds to the CWT representation. Figure 2C,D shows the CWT scalogram charts represented as a gradient colored map with the distribution of the wavelet power of the signal in the time-frequency domain. The dark regions relate the lowest power, while the yellow ones correspond to highest values.

As it is seen in Figure 2, the time changes of the raw signals evaluated by the two methods have a similarity, as well as their CWTs. Calculation of the wavelet transform coherence in correspondence with Equation (3) confirms the similarity of signals and allows one to reveal their relationships and represent them in numerical form.

Figure 3A,B illustrates a region of significant coherence throughout the data collection period around 1 to 2 Hz. This is seen in the cardiac rhythms containing in the two signals. Additionally, the regions of significant coherence around 0.01 to 0.07 Hz are observed. In other frequency bands, for example, respiratory bands, the coherence is not significant. This takes place due to small amplitude of pulsations in these bands and connection of the respiratory oscillations with the venous part of blood flow. For comparison, we show in Figure 3B the mean coherence and the 95th percentile calculated for 100 surrogates. It is worth noting that the areas of high coherence appearing outside or overlapping the cone of influence should be interpreted with caution.

Given the fact that the LDF signal is a superposition of blood flow velocity from different parts of the microvasculature with phase lag relative to each other, it is reasonable to assume the absence of phase coherence with the blood flow velocity in a single capillary. This assumption was

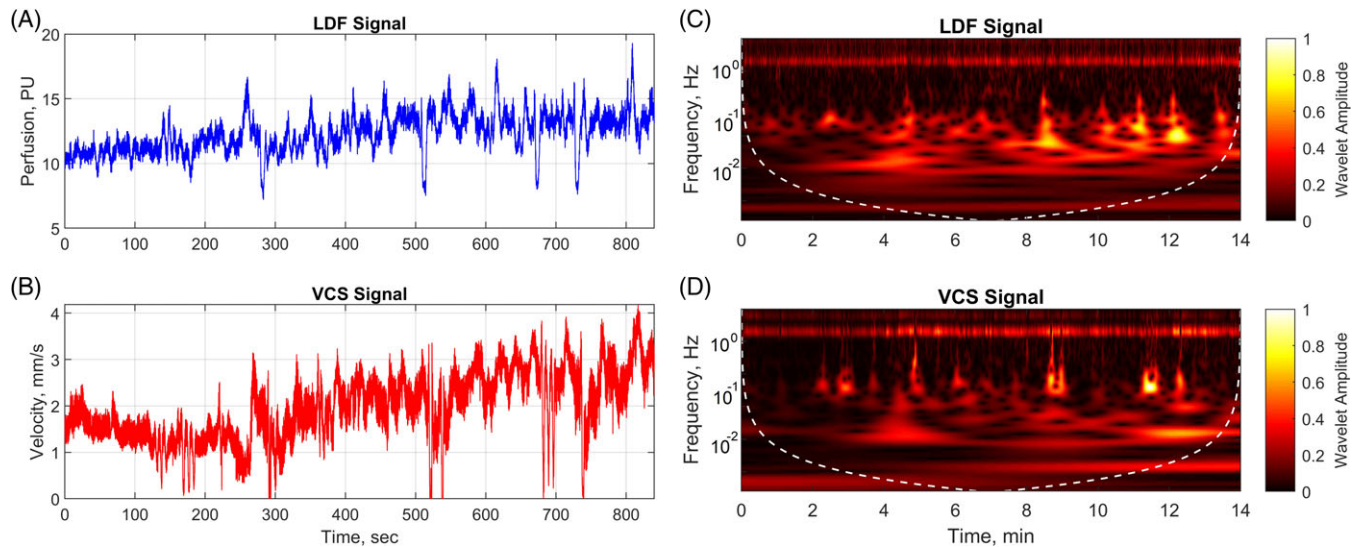


FIGURE 2 Experimental records of (A) LDF signal, (B) RBC velocity and (C, D) their CWT representation. White dash line shows the cone of influence where edge effects become significant at different frequencies

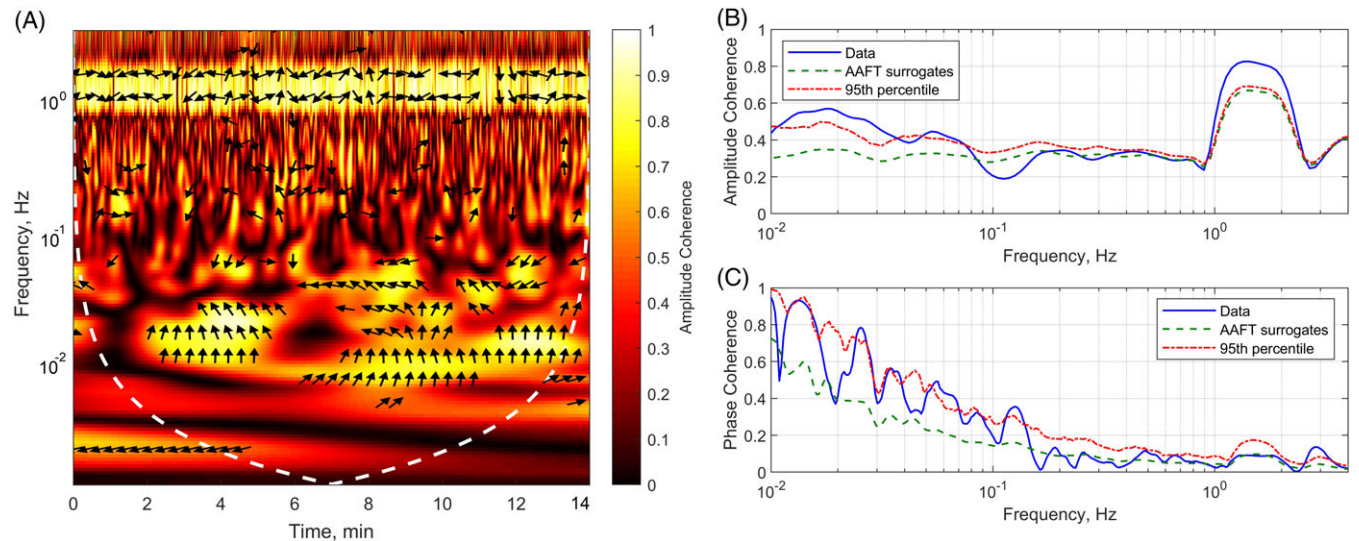


FIGURE 3 (A) Wavelet transform coherence between the LDF signal and RBCs velocity; (B) time-averaged wavelet coherence spectra and (C) wavelet phase coherence compared with the significance levels of the surrogate types shown, calculated as the 95th percentile of 100 surrogates. Arrows show the phase lag of the LDF signal with respect to RBC velocity

confirmed by calculating the phase lag and phase coherence. In Figure 3A, the arrows show the phase lag of one signal relatively to another. The direction of the arrows corresponds to the phase lag at the unit circle. The vertical arrow indicates $\pi/2$ or quarter-cycle phase lag. The arrows pointing to the right or left show two in-phase or anti-phase signals, respectively. Figure 3A,C demonstrates the absence of significant phase coherence in almost entire frequency range.

It can be supposed that cardiac oscillations in the LDF signal are recorded from larger microvessels, that is, arterioles. In normal conditions, the amplitude of pulse oscillations in capillaries is supposed to be low and hemodynamically insignificant. In this case, the presence of a capillary pulse may be an indicator of the course of a disease like microvascular pathology [29, 30]. In our studies

with healthy volunteers, we have shown that cardiac oscillation in the capillaries can make a significant contribution to the overall blood flow fluctuations.

The approach proposed has demonstrated the essential similarity of spectra oscillations in the isolated capillary and the integral estimation of the perfusion by the LDF method. This result demonstrates the deep connection of the LDF signal with objective physical characteristics of the skin blood microflow.

At the same time, the LDF method is often associated with the performance of various functional tests (breath holding, occlusive, pharmacological, etc.). The next section presents the comparative results of the observed perfusion and RBCs velocity in separate capillary during arterial occlusion test Figure 4.

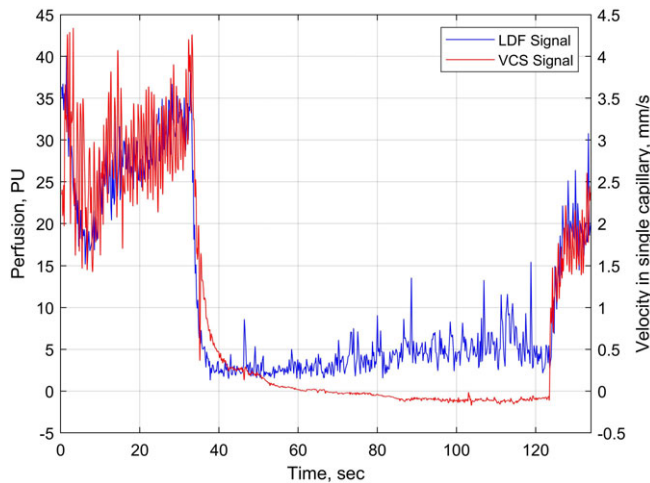


FIGURE 4 Experimental record of the LDF signal and RBCs velocity with reverse blood flow effect

3.2 | Correlation of perfusion and RBCs velocity during arterial occlusion

For the first time the VCS method allowed for registration and quantification of such feature as «reverse» blood flow during the occlusion test. The video of this experiment is available online (see Supporting Information, Movie S1). This effect identifies that the occlusion leads to a simultaneous reduction of blood flow in a single capillary from approximately 4 mm/s to small negative values, and perfusion in the distal phalanx of the finger varies from 30 to 2 perfusion units. A subsequent gradual increase to 5 perfusion units with continued occlusion is caused by detectable reverse blood flow in the capillaries.

The absolute blood flow velocity in capillaries is increasing gradually from 0 to 0.2 mm/s during the reverse blood flow effect registration (from 65 to 120 seconds during the experiment). The finish of occlusion is characterized by a sharp increase in both the perfusion and RBCs velocity. The curves reflect a high degree of correspondence between the local variations of blood perfusion and RBCs velocity before and after the occlusion. However, there is no direct correlation within the occlusion period. It can be explained by the absence of cardiac activity influence on blood microcirculation during the occlusion and redistribution of pressure among microvessels.

The well-known problem of biological zero is studied for the cases when blood flow is blocked (eg, during occlusion tests), but the signal is still detected [31, 32]. Such a problem is considered when applying the LDF method or other methods based on registration of DLS (in laser Doppler imaging, LSCI methods). It is believed in many publications that the thermal Brownian motion of particles (RBCs) is responsible for the presence of a signal [33]. However, some authors had shown in their studies non-Brownian nature of the RBCs movement after arterial occlusion. Meglinski et al. [34] have demonstrated that the presence of a directed blood flow after

complete cessation of cardiac activity can be explained by the partially retained basal tonus of the vessels and leveling of the static pressure along the vascular bed. In the other research [35], the non-Brownian nature of blood flow is mentioned even after an hour of arterial occlusion of the mouse ear. The signal increase during arterial occlusion was also observed in our studies, but it correlated with the rate of the detected reverse blood flow. These facts indicate that the effect of biological zero should be described not only by thermal motion.

4 | INCLUSION AND EXCLUSION CRITERIA

Ten healthy volunteers (six males and four females, aged 21-40 years) were recruited to participate in the experiment. In total, over 30 capillaroscopy videos of various lengths were recorded. The results obtained were reliably repeated in various series of experiments with various volunteers.

This work represents an example of the long enough video records, which allowed analyzing the rhythms of blood flow up to the low frequency of 0.01 Hz. In general, it can be noted that the data obtained for all volunteers demonstrated at least high coherence in the cardiac bands with short recordings. The phenomenon of reverse blood flow was detected in experiments involving all volunteers, but the effect was observed with different persons at different times after the onset of occlusion.

The study was approved by the ethics committee at Orel State University named after I.S. Turgenev (record of the meeting No. 10 of November 16, 2017) and was carried out in accordance with the principles outlined in the 2013 Declaration of Helsinki by the World Medical Association. The study protocol and its purpose were explained in detail to each volunteer and the informed consent was obtained from each person. The study included no volunteers with cardiovascular, bronchopulmonary or neuroendocrine system disease comorbidities, no one with diseases of the gastrointestinal tract, liver, kidneys, blood or with any other serious chronic diseases, which could have an impact on the results.

5 | CONCLUSION

Analysis and interpretation of blood microcirculation present a complicated problem. The LDF is still one of the most attractive methods for that, whereas the difficulties of its application arise because of a lack of spatial visualization of the area of measurement and the inherently complex nature of microvascular flow. For this reason new modalities for blood flow evaluation assist in better understanding of microcirculation mechanisms. Particularly, the combined application of the LDF and VCS methods gives additional useful information to improve the data interpretation concerning with blood flow. It becomes possible to compare the changes in the perfusion in certain tissue volume in parallel

with simultaneous evaluation of local RBCs velocity and its direction in a single capillary. The proposed approach with the application of wavelet transforms coherence to search time-localized coherent oscillatory behavior has demonstrated the essential similarity of spectra oscillations in the isolated capillary and the integral estimation of the perfusion by the LDF method. This study experimentally confirms the similarity between RBCs velocity in capillaries and blood perfusion of human skin evaluated by the LDF method and demonstrates the deep connection of the LDF signal origin with objective physical characteristics of the skin blood microflow.

An important and novel result of the paper is the observation that the presence of a LDF signal during occlusion (biological zero) can be caused not only by the Brownian motion of the RBCs, but also by the reverse blood flow. The current study adds an important element in our understanding of the characteristics of the blood flow and as such will be helpful in further research.

ACKNOWLEDGMENTS

This study was supported by the Russian Science Foundation under project No. 18-15-00201 (collection and processing of experimental data by the CWT) and Ministry of Science and Higher Education of the Russian Federation under project No. 8.2501.2017/4.6 (development of the experimental setup, processing and evaluation of the VCS experimental data). E.Z. kindly acknowledges for personal support from grant of Academy of Finland No. 318281.

AUTHOR BIOGRAPHIES

Please see Supporting Information online.

ORCID

Viktor Dremine  <https://orcid.org/0000-0001-6974-3505>
 Nikita Margaryants  <https://orcid.org/0000-0002-3767-3618>
 Evgeny Zherebtsov  <https://orcid.org/0000-0002-3635-1430>
 Andrey Dunaev  <https://orcid.org/0000-0003-4431-6288>
 Igor Gurov  <https://orcid.org/0000-0003-4119-7922>

REFERENCES

- [1] V. V. Tuchin, *Handbook of Coherent-Domain Optical Methods: Biomedical Diagnosis, Environmental Monitoring, and Materials Science*, Springer, New York **2013**, p. 1332.
- [2] V. Rajan, B. Varghese, T. G. van Leeuwen, W. Steenbergen, *Lasers Med Sci* **2009**, *24*, 269.
- [3] J. Allen, K. Howell, *Physiol Meas* **2014**, *35*, R91.
- [4] S. M. Daly, M. J. Leahy, *J Biophotonics* **2013**, *6*, 217.
- [5] Z. Fahimi, F. J. Aangenendt, P. Voudouris, J. Mattsson, H. M. Wyss, *Phys Rev E* **2017**, *96*, 62611.
- [6] M. Ninck, M. Untenberger, T. Gisler, *Biomed Opt Express* **2010**, *1*, 1502.
- [7] G. Lancaster, A. Stefanovska, M. Pesce, G. Marco Vezzoni, B. Loggini, R. Pingitore, F. Ghiara, P. Barachini, G. Cervadoro, M. Romanelli, M. Rossi, *Sci Rep* **2015**, *5*, 12825.

- [8] H. D. Kvermmo, A. Stefanovska, K. A. Kirkeboen, K. Kvernebo, *Microvasc Res* **1999**, *57*, 298.
- [9] P. Kvandal, S. A. Landsverk, A. Bernjak, A. Stefanovska, H. D. Kvermmo, K. A. Kirkeboen, *Microvasc Res* **2006**, *72*, 120.
- [10] E. A. Zherebtsov, A. I. Zherebtsova, A. Doronin, A. V. Dunaev, K. V. Podmasteryev, A. Bykov, I. Meglinski, *J Biomed Opt* **2017**, *22*, 40502.
- [11] V. V. Dremine, E. A. Zherebtsov, V. V. Sidorov, A. I. Krupatkin, I. N. Makovik, A. I. Zherebtsova, E. V. Zharkikh, E. V. Potapova, A. V. Dunaev, A. A. Doronin, A. V. Bykov, I. E. Rafailov, K. S. Litvinova, S. G. Sokolovski, E. U. Rafailov, *J Biomed Opt* **2017**, *22*, 085003.
- [12] I. Gurov, M. Volkov, N. Margaryants, A. Pimenov, A. Potemkin, *Opt Lasers Eng* **2018**, *104*, 244.
- [13] M. Bonesi, D. Churmakov, I. Meglinski, *Meas Sci Technol* **2007**, *18*, 3279.
- [14] P. T. Goedhart, M. Khalilzada, R. Bezemer, J. Merza, C. Ince, *Opt Express* **2007**, *15*, 15101.
- [15] M. Sorelli, L. Bocchi, C. Ince, *37th Annu. Int. Conf. IEEE Eng. Med. Biol. Soc. IEEE Publishing, Piscataway, NJ* **2015**, p. 7378.
- [16] M. Sorelli, C. Ince, L. Bocchi, *Physiol Meas* **2017**, *38*, 358.
- [17] M. V. Volkov, N. B. Margaryants, A. V. Potemkin, M. A. Volynsky, I. P. Gurov, O. V. Mamontov, A. A. Kamshilin, *Sci Rep* **2017**, *7*, 13298.
- [18] M. V. Volkov, D. A. Kostrova, N. B. Margaryants, I. P. Gurov, N. P. Erofeev, V. V. Dremine, E. V. Zharkikh, E. A. Zherebtsov, I. O. Kozlov, A. V. Dunaev, *Proc. SPIE. 10336*, SPIE Publishing, Bellingham, WA **2017**, p. 1033607.
- [19] A. Grinsted, J. C. Moore, S. Jevrejeva, *Nonlinear Process Geophys* **2004**, *11*, 561.
- [20] C. Chang, G. H. Glover, *NeuroImage* **2010**, *50*, 81.
- [21] X. Cui, D. M. Bryant, A. L. Reiss, *NeuroImage* **2012**, *59*, 2430.
- [22] C. Torrence, G. P. Compo, *Bull Am Meteorol Soc* **1998**, *79*, 61.
- [23] A. Bandrivskyy, A. Bernjak, P. McClintock, A. Stefanovska, *Cardiovasc. Eng.* **2004**, *4*, 89.
- [24] G. Lancaster, D. Iatsenko, A. Pidde, V. Ticcinelli, A. Stefanovska, *Phys Rep* **2018**, *748*, 1.
- [25] P. Frick, I. Mizeva, S. Podtaev, *Biomed. Signal Process. Control* **2015**, *21*, 1.
- [26] L. W. Sheppard, V. Vuksanović, P. V. E. McClintock, A. Stefanovska, *Phys Med Biol* **2011**, *56*, 3583.
- [27] A. Bernjak, A. Stefanovska, P. V. E. McClintock, P. J. Owen-Lynch, P. B. M. Clarkson, *Fluct Noise Lett* **2012**, *11*, 1240013.
- [28] A. V. Tankanag, A. A. Grinevich, T. V. Kirilina, G. V. Krasnikov, G. M. Piskunova, N. K. Chemeris, *Microvasc Res* **2014**, *95*, 53.
- [29] A. C. Guyton, *Textbook of Medical Physiology*, Elsevier, Amsterdam, Netherlands **2006**, p. 1152.
- [30] C. G. Caro, T. J. Pedley, R. C. Schroter, W. A. Seed, K. H. Parker, *The Mechanics of the Circulation*, Cambridge University Press, Cambridge, England **2011**, p. 524.
- [31] C. Millet, M. Roustit, S. Blaise, J. L. Cracowski, *Microvasc Res* **2011**, *82*, 147.
- [32] A. Humeau-Heurtier, P. Abraham, G. Mahe, *IEEE Trans Med Imaging* **2013**, *32*, 2311.
- [33] T. Binzoni, T. S. Leung, M. L. Seghier, D. T. Delpy, *Phys Med Biol* **2004**, *49*, 5445.
- [34] I. V. Meglinski, V. V. Kalchenko, Y. L. Kuznetsov, B. I. Kuznik, V. V. Tuchin, *Dokl Phys* **2013**, *58*, 323.
- [35] V. Kalchenko, A. Brill, M. Bayewitch, I. Fine, V. Zharov, E. Galanzha, V. Tuchin, A. Harmelin, *J Biomed Opt* **2007**, *12*, 052002.

SUPPORTING INFORMATION

Additional supporting information may be found online in the Supporting Information section at the end of the article.

How to cite this article: Dremine V, Kozlov I, Volkov M, et al. Dynamic evaluation of blood flow microcirculation by combined use of the laser Doppler flowmetry and high-speed videocapillaroscopy methods. *J. Biophotonics*. 2019;e201800317. <https://doi.org/10.1002/jbio.201800317>